

# Winter Guide

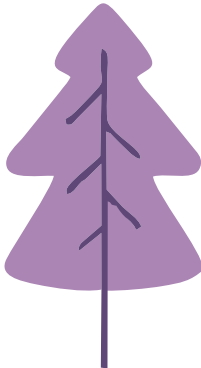
Get the  
**Blazes**

**OUTSIDE!**  
(Please and thank you)



This Guide features spaces and places located throughout Colchester County. This guide includes municipally owned, operated and maintained spaces as well as Millbrook First Nation owned, operated and maintained spaces (unless otherwise stated). We would like to acknowledge that the land on which Colchester County is located is the traditional and unceded territory of the Mi'kmaq nation.

# Hello Winter!



## Table of Contents

Outdoor Skating	Page 4
Snowshoeing, Hiking & Walking	Page 6
Cross-Country Skiing	Page 12
Fat Biking & Mountain Biking	Page 14
Parks & Open Spaces	Page 18
Playgrounds	Page 24
Sledding	Page 27
Off Leash Dog Parks	Page 28
Equipment Loan Programs	Page 30
Other ways to Stay Active this Winter	Page 32

# Outdoor Skating



**Civic Square - Caldwell Roach Kings Mutual Insurance  
Ice Surface – 740 Prince Street, Truro**  
Refrigerated outdoor ice surface.

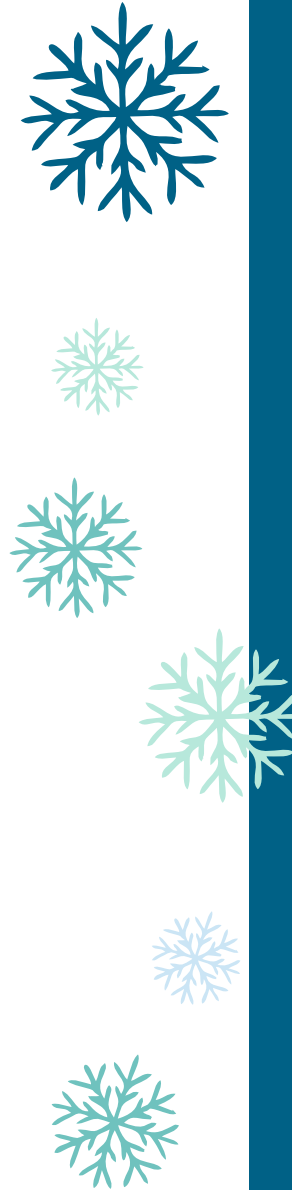
Helmets recommended.

COVID - 19 induced modifications in place. Numbers permitted on ice will follow Public Health directives.

Participants and spectators must pre-register at [www.truro.ca](http://www.truro.ca)

**Dennis Park Natural Skating Pond – 54 Main Street West,  
Stewiacke**  
Natural pond used for skating during Winter months.

**Meadowland Skating / Hockey Rink – 52 Meadowland  
Avenue, Bible Hill**  
Natural pond used for outdoor skating and hockey.



**Welcome to our  
smoke free spaces**

**PLEASE**  
follow all rules posted at  
each space and place.

# Snowshoeing, Hiking & Walking



## **Bible Hill Recreation Park – 64 Guest Drive, Bible Hill**

Park with a walking path, large sets of playground equipment as well as a natural playground.

## **Cobequid Trail – Multiple Trailheads**

Old Barns trailhead (919 Shore Road, Old Barns), Cobequid Bay Lookoff trailhead (3471 Highway 236, Lower Truro), Fundy Discovery Site trailhead (103 Tidal Bore Road, Lower Truro), Truro trailhead (202 Willow Street, Truro), Eagle Crest trailhead (39 Warren Drive, Bible Hill), Farnham Brook trailhead (36 Village Court, Bible Hill), Bible Hill Recreation Park trailhead (64 Guest Drive, Bible Hill).

18km trail network in central Colchester County.

Open year round.

Walking, cycling, cross-country skiing, and snowshoeing are permitted.

Motorized vehicles are prohibited.

Dogs on leash are permitted. Please pick up after your dog.



## **Dennis Park – 54 Main Street West, Stewiacke**

Offers many things such as a walking track, natural playground, outdoor fitness equipment and skating pond.

The walking track is a 600m loop going around the outside of the park, giving one the perfect view of the entire park.

Park includes two gazebos, multiple picnic tables and benches to relax and enjoy the park.

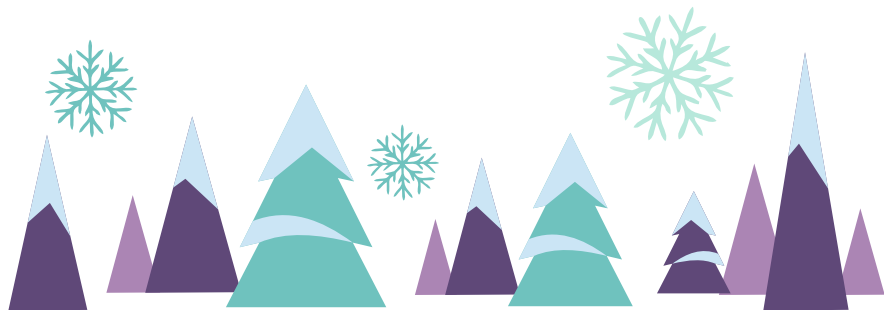
## **Five Islands Lighthouse Park - 140 Broderick Lane, Five Islands**

1km walking path meanders through this 22 - acre coastal park.

Lighthouse ship playground and picnic shelter.

Sit a while on one of the benches and enjoy the amazing, panoramic view of the Minas Basin.

Washrooms closed for the winter.



### **John B. Trail - Millbrook**

Access to trailhead: turn left at 945 Willow Street. Trailhead is 250m up the road.

2km crushed stone and gravel loop which begins at the end of the Woodchip Trail.

Originally a logging road established by Community members, who are now stewards of the trail and work with the Millbrook Band Council to preserve/ maintain the trail.

Walking and cycling are permitted on the trail.

### **John Crawford Trail – 185 Kitchener Street, Stewiacke**

First section of the trail is a 350m crusher dust loop from the parking lot and back, with many dedicated benches along the way.

The second section of the trail is more of a nature trail focus. This section takes one through the back woods and through a wetland. This section of the trail also loops back and is a total of 1.6kms.

Total of two sections being 1.9kms.

### **Kiwanis Park – 39 Juniper Street, Truro**

Walking Track around Kiwanis Park Pond.

1 lap around the pond is equal to 0.6km.

Plowed and salted for walking during winter months.

### **Millbrook Powwow Grounds Walking Track – 943**

#### **Willow Street, Truro**

The Powwow grounds hosts a traditional arbor situated in the middle which is surrounded by a 400m gravel and crusher dust walking track.

Walking, cycling and wheeling are permitted on the track.

### **Nelson Memorial Park – 153 Loop of Highway 6, Bayhead**

Explore the walking trails in the park or the Butter Trail (rail trail), part of the Great Trail.

This 47-acre park is set in a quiet, natural setting beside Tatamagouche Bay on the Northumberland Shore.

Picnic shelters, playground and ocean view.

Washrooms closed for the winter.

### **River Country Trail – 71 Highway 2, Stewiacke**

First phase of the trail is 1.4kms which connects Mastodon Ridge to the Stewiacke Ballfields and offers stunning views of the Stewiacke River.

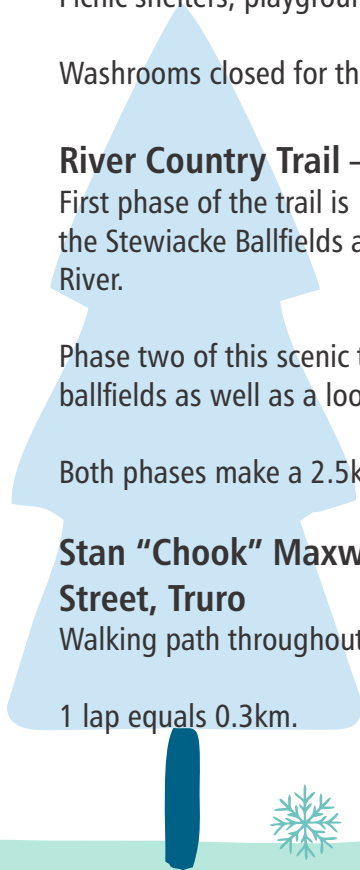
Phase two of this scenic trail includes an added loop surrounding the ballfields as well as a loop back to Mastodon Ridge.

Both phases make a 2.5km trail.

### **Stan “Chook” Maxwell Memorial Park – 264 Prince Street, Truro**

Walking path throughout the parks greenspace.

1 lap equals 0.3km.



## Stewiacke River Park – 528 Stewiacke River Park Road, East Stewiacke

This 2km mostly flat trail along the river and through the forest is good for beginner snowshoeing.

Benches are located along the trail.

Picnic shelters and playground.

Washrooms open year round.

**T.A.A.C. Grounds – 75 Golf Street, Truro**  
0.4km (quarter-mile), 5 lane walking track.

Groomed during winter months.

Includes Jamie Sheppard Memorial Playground.

## Victoria Park – 29 Park Road, Truro

75kms of groomed trails during winter months in the upper and lower park.

For trail maps please visit [www.truro.ca](http://www.truro.ca)

Dogs on leash are permitted. Please pick up after your dog.

Please refer to the Share the Trails sign in this guide on how to properly use the trails.



# PLEASE SHARE THE TRAIL



## Wood Chip Trail - Millbrook

Two Entry Points: End of Church Road and turning left at 945 Willow Street. Trailhead is 250m up the road.

Trailhead is adjacent to John B. Trail.

700m multi-surface trail through a forested area of spruce, hemlock and fir that allows one to see many different wildlife species along the way.

Walking is permitted on this trail.

This trail is managed and maintained by Millbrook First Nation Band Office with assistance from the Mi'kmaw Conservation Group.

## HELP US OUT

If you fall and leave dents or boot marks on the trails please fill them with snow.

 <b>SKI</b> on groomed trails	 <b>FAT BIKE</b> in packed snow	 <b>WALK</b> on edge of trail	 <b>SNOWSHOE</b> in powder
--	--	--	---

# Cross-Country Skiing



## **Cobequid Trail – Multiple Trailheads**

Old Barns trailhead (919 Shore Road, Old Barns), Cobequid Bay Lookoff trailhead (3471 Highway 236, Lower Truro), Fundy Discovery Site trailhead (103 Tidal Bore Road, Lower Truro), Truro trailhead (202 Willow Street, Truro), Eagle Crest trailhead (39 Warren Drive, Bible Hill), Farnham Brook trailhead (36 Village Court, Bible Hill), Bible Hill Recreation Park trailhead (64 Guest Drive, Bible Hill).

18km walking and bicycling trail network in central Colchester County.

Open year round.

Walking, cycling, cross-country skiing, and snowshoeing are permitted.

Motorized vehicles are prohibited.

Dogs on leash are permitted. Please pick up after your dog.

## **Railyard Mountain Bike Park – 627 Young Street, Truro**

44kms of trails.

51 trails of different difficulties.

Groomed during winter months.

Please refer to the Share the Trails sign in this guide on how to properly use the trails.

## **TAAC – 75 Golf Street, Truro**

0.4km (quarter-mile) track.

Groomed during winter months.

## **Victoria Park – 29 Park Road, Truro**

75kms of groomed trails during winter months in the upper and lower park.

For trail maps please visit [www.truro.ca](http://www.truro.ca)

Please refer to the Share the Trails sign in this guide on how to properly use the trails.

# Fat Biking Mountain Biking

## **Cobequid Trail - Multiple Trailheads**

Old Barns trailhead (919 Shore Road, Old Barns), Cobequid Bay Lookoff trailhead (3471 Highway 236, Lower Truro), Fundy Discovery Site trailhead (103 Tidal Bore Road, Lower Truro), Truro trailhead (202 Willow Street, Truro), Eagle Crest trailhead (39 Warren Drive, Bible Hill), Farnham Brook trailhead (36 Village Court, Bible Hill), Bible Hill Recreation Park trailhead (64 Guest Drive, Bible Hill).

18km walking and bicycling trail network in central Colchester County.

Open year round.

Walking, cycling, cross-country skiing, and snowshoeing are permitted.

Motorized vehicles are prohibited.

Dogs on leash are permitted. Please pick up after your dog.



## **Nelson Memorial Park - 153 Loop of Highway 6, Bayhead**

Explore the Butter Trail (rail trail), part of the Great Trail.

47-acre park in a quiet, natural setting beside Tatamagouche Bay on the Northumberland Shore.

Picnic Shelters, playground and Ocean View.

Washrooms closed for the winter.

## **Pat Mahaney Bike Trails – 39 Warren Drive, Bible Hill**

2.6km trail in a wooded area with loops for three skill levels (beginner, intermediate, and advanced).





**Railyard Mountain Bike Park – 627 Young Street, Truro**  
Over 40kms of trail.

51 trails for all skill and ability levels.

Green, Blue and Black trails based on level of difficulty.

Groomed during winter months.

Please refer to the Share the Trails sign in this guide on how to properly use the trails.



**Stewiacke River Park – 528 Stewiacke River Park Road, East Stewiacke**

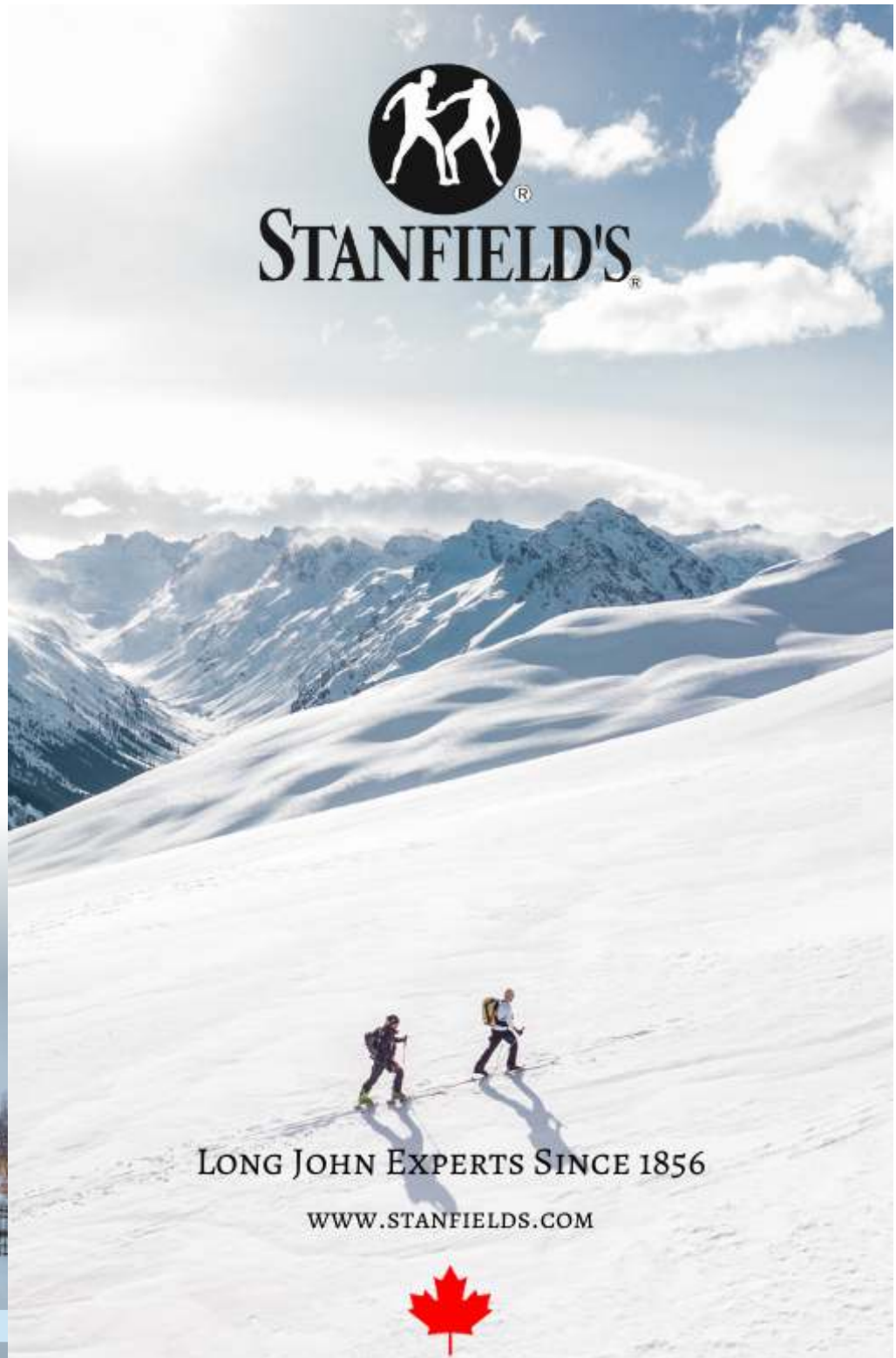
2km trail along the river through the forest.



Benches are located along the way.

Picnic shelters and playground.

Washrooms open year round.





**Armstrong Park – 65 Armstrong Drive, Bible Hill**

Park / greenspace in a residential neighbourhood.

**Bible Hill Recreation Park – 64 Guest Drive, Bible Hill**

Park with a large greenspace, playground equipment, natural playground and walking trail.

**Birch Street Park – 75 Birch Street, Salmon River**

Swings and a play structure in a residential neighbourhood.

**Civic Square - Caldwell Roach Kings Mutual Insurance**

**Ice Surface – 740 Prince Street, Truro**

Normally a large, flexible open greenspace. During the winter months it is occupied by the Caldwell Roach Kings Mutual Insurance Ice Surface.

Please see the Outdoor Skating section for more information.

Includes outdoor musical instruments.

**Clover Drive Park – 27 Clover Drive, Bible Hill**

Park / greenspace in a residential neighbourhood.

**Dennis Park – 54 Main Street, West Stewiacke**

Offers many things such as a walking track, natural playground, outdoor fitness equipment and skating pond.

The walking track is a 600m loop going around the outside of the park, giving one the perfect view of the entire park.

Park includes two gazebos, multiple picnic tables and benches to relax and enjoy the park.

**Farnham Road Park – 244 Vimy Road, Bible Hill**

Park / greenspace in a residential neighbourhood.

**Fielding Avenue Park – 22 Fielding Avenue, Bible Hill**

Park / greenspace in a residential neighbourhood.

**Five Island Lighthouse Park – 140 Broderick Lane, Five Islands**

1km walking path meanders through this 22 - acre coastal park.

Lighthouse, ship playground and picnic shelter.

Sit a while on one of the benches and enjoy the amazing, panoramic view of the Minas Basin.

Washrooms closed for the winter.

**Fundy Discovery Site - 103 Tidal Bore Road, Lower Truro**

A park overlooking the Salmon River where you can observe the Tidal Bore twice daily at predicted times.

A one-of-a-kind natural playground with a Bay of Fundy theme.

Washrooms and visitor centre closed for the winter.

### **Herb Peppard Park – 24 Alice Street, Truro**

Appealing fenced park in the East End of Truro including a green space with a children's playground, a gazebo, and multiple benches.



### **Hilden Recreation Park - 29 William Russell Road, Hilden**

Swings, a play structure and an open green space in a residential neighbourhood.

### **Hillcrest Avenue Park – 117 Hillcrest Avenue, Bible Hill**

Park / greenspace in a residential neighbourhood.

### **Holy Well Park – 66 Main Street, Bible Hill**

Park / greenspace in a residential neighbourhood.



### **John Crawford Trail – 185 Kitchener Street, Stewiacke**

First section of the trail is a 350m crusher dust loop from the parking lot and back, with many dedicated benches along the way.

The second section of the trail is more of a nature trail focus. This section takes one through the back woods and through a wetland. This section of the trail also loops back and is a total of 1.6kms.



Total of two sections being 1.9kms.

### **Kiwanis Park – 39 Juniper Street, Truro**

Inviting park which hosts a relaxing space to watch wildlife in and around the pond.

Includes a walking path around the pond. 1 lap around the pond is equal to 0.6km.

### **Millbrook Powwow Grounds – 943 Willow Street, Truro**

The Powwow grounds hosts a traditional arbor situated in the middle which is surrounded by a 400m walking track.

### **Mount Pleasant Boulevard Greenspace – 214 Glenwood Drive, Truro**

Large green space bordering Mount Pleasant Blvd. and Glenwood Dr, perfect for playing in the snow!

### **Murdock Drive Park – 42 Murdock Drive, Bible Hill**

Park / greenspace in a residential neighbourhood.

### **Nancy Avenue Park – 6 Nancy Avenue, Salmon River**

Swings and a large, open green space in a residential neighbourhood.

No Parking.

### **Nelson Memorial Park – 153 Loop of Highway 6, Bayhead**

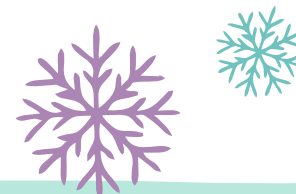
47 - acre park in a quiet, natural setting beside Tatamagouche Bay on the Northumberland Shore.

Walk along the paths through the woods or along the gravel beach and watch for wildlife.

Explore the Butter Trail (Rail Trail), part of The Great Trail.

Picnic Shelters, playground and ocean view.

Washrooms close for the winter.



### **Oakland Park – 96 Oakland Drive, Lower Onslow**

Swings, a play structure and a greenspace in a residential neighbourhood.

### **Pleasant Street Playground – 449 Pleasant Street, Truro**

Located beside the water tower on Pleasant Street including a greenspace and children's playground.

### **Poplar Drive Park – 19 Poplar Drive, Bible Hill**

Park / greenspace in a residential neighbourhood.

### **River Country Trail – 71 Highway 2, Stewiacke**

First phase of the trail is 1.4kms which connects Mastodon Ridge to the Stewiacke Ballfields and offers stunning views of the Stewiacke River.

Phase two of this scenic trail includes an added loop surrounding the ballfields as well as a loop back to Mastodon Ridge.

Both phases make a 2.5km trail.

Small playground located near trailhead.

### **Riverfront Park – 10 Bayview Street, Truro**

Situated along the Salmon River beside the bridge linking Truro to Bible Hill.

Attractive park with lights, a gazebo, picnic tables and a green space making it the perfect way to relax and enjoy winter.

### **Scenic Drive Park – 23 Maple Boulevard, Bible Hill**

Park / greenspace in a residential neighbourhood.

### **Stan "Chook" Maxwell Memorial Park – 264 Prince Street, Truro**

Beautiful park / greenspace and children's playground which encourages recreation and the enjoyment of the outdoors.

### **Stewiacke River Park – 528 Stewiacke River Park Road, East Stewiacke**

Enjoy this 66 - acre, natural, forested park with mature pine, hemlock and spruce trees.

Walk or snowshoe 2kms of trail along the river and through the forest.

Benches are located along the trail.

Picnic shelters and playground.

Washrooms open year round.

### **T.A.A.C. Grounds – 75 Golf Street, Truro**

Large green space including a 0.4km (quarter-mile), five-lane running and walking track; field event facilities; football field, senior baseball field and Jamie Sheppard Memorial Playground.

### **Teakwood Drive Park – 27 Teakwood Drive, Bible Hill**

Park / greenspace in a residential neighbourhood.

### **Victoria Park – 29 Park Road, Truro**

3000-acre park in Downtown Truro, rich with history, and breathtaking scenic forest.

Many trails for all abilities.

For trail maps please visit [www.truro.ca](http://www.truro.ca)

Dogs on leash are permitted. Please pick up after your dog.

### **Village Court Park – 36 Village Court, Bible Hill**

Park / greenspace in a residential neighbourhood.



# Playgrounds

## **Bible Hill Recreation Park – 64 Guest Drive, Bible Hill**

Park with large sets of playground equipment including natural playground equipment.

## **Birch Street Park – 75 Birch Street, Salmon River**

Swings and a play structure in a residential neighbourhood.

## **Debert Playground – 80 Dieppe Avenue, Debert**

A shaded playground with swings and a play structure in a residential neighbourhood.

Large football field that is great for cross-country skiing and snowshoeing.

## **Dennis Park Playground – 54 Main Street, West Stewiacke**

Offers many things such as a natural playground, walking track, outdoor fitness equipment and skating pond.

Park also includes two gazebos, multiple picnic tables and benches to relax and enjoy the park.

## **Five Island Lighthouse Park 140 Broderick Lane, Lower Five Islands**

A playship playground in a coastal park with a beautiful view of the Bay of Fundy. Ship ahoy!



## **Fundy Discovery Site – 103 Tidal Bore Road, Lower Truro**

A one-of-a-kind natural playground with a Bay of Fundy theme.

Washrooms closed for the winter.

## **Herb Peppard Park – 24 Alice Street, Truro**

Appealing fenced park in the East End of Truro with a children's playground including a gazebo, multiple benches and a greenspace.

## **Hilden Recreation Park – 29 William Russell Road, Hilden**

Swings, a play structure and an open greenspace in a residential neighbourhood.

## **Nancy Avenue Park – 6 Nancy Avenue, Salmon River**

Swings and a large, open greenspace in a residential neighbourhood.

## **Nelson Memorial Park – 153 Loop of Highway 6, Bayhead, NS**

47 - acre park in a quiet, natural setting on the Northumberland Shore.

Swings and a play structure with a view of Tatamagouche Bay.

Washrooms closed for the winter.

## **Oakland Park – 98 Oakland Drive, Lower Onslow**

Swings and a play structure in a residential neighbourhood.

## **Pleasant Street Playground – 449 Pleasant Street, Truro**

Located beside the water tower on Pleasant Street including a children's playground and a greenspace.

## **Poplar Drive Park – 19 Poplar Drive, Bible Hill**

Park / greenspace with playground equipment in a residential neighbourhood.

## **Stan “Chook” Maxwell Memorial Park Playground – 264 Prince Street, Truro**

Children's playground located alongside a great greenspace which encourages recreation and the enjoyment of the outdoors.

## **Stewiacke Rec Grounds – 71 Highway 2, Stewiacke**

Small playground located near multiple sports fields, skate park, and off leash dog park.

The Trailhead for the Stewiacke River Country Trail is located at this location.

## **Stewiacke River Park – 528 Stewiacke River Park, East Stewiacke**

A shaded playground with swings and a play structure in a 66 - acre, beautiful, natural park.

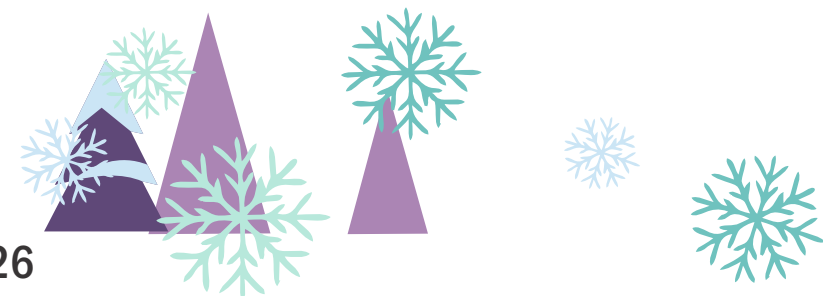
Washrooms open year round.

To access the playground in the winter, park at the gate and walk along the trail or road.

## **Jamie Shephard Memorial Playground – 47 Golf Street, Truro**

Located at the T.A.A.C. Ground.

Children's playground with a large green space including a 0.4km (quarter-mile), five-lane running and walking track; field event facilities; football field, senior baseball field.



## **Victoria Park Playground – 29 Park Road, Truro**

3000-acre park in Downtown Truro, rich with history, and breathtaking scenic forest.

Large children's playground situated in the lower portion of Victoria Park.

Dogs on leash are permitted. Please pick up after your dog.

## **Village Court Park – 36 Village Court, Bible Hill**

Park / greenspace with playground equipment in a residential neighbourhood.

# Sledding

## **Bible Hill Recreation Park – 64 Guest Drive, Bible Hill**

Park with a large playground equipment, natural playground with a large sledding hill.

## **Truro-Colchester Legion Hill – 32 Brunswick Street, Truro**

Large hill that is perfect for sledding / tobogganing during the winter months, when snow-covered.



# Off leash Dog Parks

**Elsie's Dog Park**  
107 Dieppe Avenue, Debert  
Debert Recreation Park.

Fenced in dog park, which offers spaces for large and small dogs to stretch their legs and make new friends.

Users are asked to please follow the rules posted at the park.

**Janet Cole Memorial Dog Park – 153 Loop of Highway 6, Bayhead**  
Nelson Memorial Park.

This fenced in dog park offers a space for small and large dogs to stretch their legs and make new friends.

Users are asked to please follow the rules posted at the park

**The Barking Lot – 71 Highway 2, Stewiacke**  
Secure off-leash dog park.

Access is free.

Use at your own risk.

Waste bags are supplied to pick up after your dogs.

Two sections; one big and one small within the park.



**Truro & Bible Hill Off-Leash Dog Park – 48 Marshland Drive, Truro**

2.5-acres of fenced in property including grassy play areas and water.

Two grassy play areas (one for small dogs and one for large dogs).

For safety of dogs, their owners and the public, users are asked to please adhere to rules which are posted at the park.



# Equipment Loan Programs

## **Adapted Equipment Loan Program: Douglas Street Recreation Centre – 40 Douglas Street, Truro**

Rentals must be prebooked.

Adult and Child Hippocampes.

Duet Cycle, Sledges, Snowcoaches, Tomato Seats.

Call Douglas Street Recreation Centre to book 902-893-6078.

## **Bible Hill Snowshoe Loan Program – Village Office: 67 Pictou Road, Bible Hill**

Call 902-893-8083 to reserve.

## **Municipality of Colchester – Recreation Department (3rd Floor): 1 Church Street, Truro**

Youth and adult snowshoes available.

Rentals available Monday to Friday 9:00am to 4:00pm.

Call ahead to reserve time slot 902-897-3185.



## **Stewiacke Equipment Loan Program: Stewiacke Town Office - 295 George Street, Stewiacke**

20 Pairs of Snowshoes of various sizes.

Required \$20 refundable deposit.

Saucers available for sledding / tobogganing.

## **Town of Truro Skate Loan Program: Truro Public Library – 754 Prince Street, Truro**

Library card is required. Two pairs of skates can be borrowed per adult card.

Two Day Rental.

Tuesdays 5:00pm to 7:30pm  
Wednesdays 5:00pm to 7:30pm  
Fridays 1:00pm to 4:30pm  
Saturdays 10:00am to 2:00pm

## **Town of Truro Winter Equipment Loan Program: Douglas Street Recreation Centre – 40 Douglas Street, Truro**

Cross Country Skis and Snowshoes available.

Rentals are free of charge.

Pickup Thursdays from 9:30am to 4:00pm and Dropoff on Mondays from 9:30am to 4:00pm.

Or

Pickup Fridays between 9:30am to 4:00pm and Dropoff on Tuesdays between 9:30am to 4:00pm.





# Other Ways to Stay Active



# this Winter

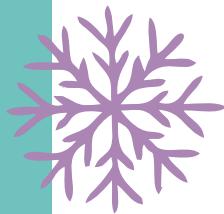
**Colchester Legion Stadium – 14 Lorne Street, Truro (902) 893-1701**  
Skating (Must pre-register).

Adult Skating (Drop In)  
Tuesday 10:00am – 11:30am  
Thursday 9:30am – 10:30am  
Friday 1:15pm – 2:30pm  
Pre-School / Parent & Tot (Drop In)  
Thursday 10:30am – 11:30am

**Junior Pleasure Skate – FULL (to be put on the waitlist email [jdawe@truro.ca](mailto:jdawe@truro.ca))**  
Friday 6:00pm – 7:00pm  
[www.rectimes.app/truro/cat/cls](http://www.rectimes.app/truro/cat/cls)

**Deville's Rink – 50 Harmony Road, Salmon River (902)-893-9651**  
Not a Municipally operated facility.

Indoor Ice Surface.



**Douglas Street Recreation Centre – 40 Douglas Street, Truro (902) 893-6078**

Various groups and organizations rent out the facility.

Pickleball (Must pre-register)  
Tuesday 11:00am, 12:00pm, 1:00pm  
Wednesday 11:00am, 12:00pm, 1:00pm  
Thursday 11:00am, 12:00pm, 1:00pm

**Don Henderson Memorial Sportsplex – 55 Carter Road, Brookfield (902) 673-2063**

Not a Municipally operated facility.

Indoor Ice Surface.  
[www.rectimes.app/donhendersonmemorialsportsplex](http://www.rectimes.app/donhendersonmemorialsportsplex)



**North Shore Recreation Centre – 30 Blair Avenue, Tatamagouche (902) 657-3121**

Not a Municipally operated facility.

Indoor Ice Surface and Hall.

[www.rectimes.app/northshorerecreationcentre](http://www.rectimes.app/northshorerecreationcentre)



**Rath Eastlink Community Centre – 625 Abenaki Road,  
Truro (902) 893-2224**

Not a Municipally operated facility.

Facility includes the following amenities:

Indoor Ice Surface

Aquatic Centre

Walking Track

Fitness Centre

Rock Wall

[www.ratheastlinkcommunitycentre.ca](http://www.ratheastlinkcommunitycentre.ca)

**West Colchester United Arena – 1089 Masstown Road,  
Debert (902) 662-4014**

Not a Municipally operated facility.

Indoor Ice Surface.

[www.rectimes.app/westcolchesterunitedarena](http://www.rectimes.app/westcolchesterunitedarena)

**Stewiacke Community Centre for Indoor Programming –  
111 Highway 2, Stewiacke (902) 639-2111**

Offers fitness programs for children up to seniors.

Programs such as floor hockey, toddler play group, senior fitness, yoga, adult dodgeball and boot camp.

Option for walking around the community centre is an option upon request.

Contact info for programming or rental: Erin Richard 902-639-2111.

